

FINGERING CHART

BARITONE B.C.

Instrument Care Reminders

Before putting your instrument back in its case after playing, do the following:

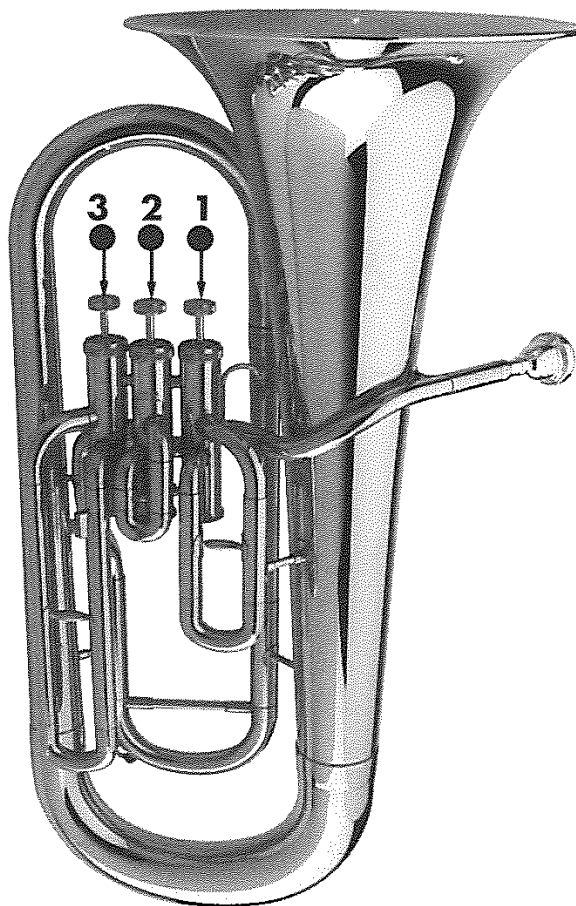
- Use the water key to empty water from the instrument. Blow air through it.
 - Remove the mouthpiece. Once a week, wash the mouthpiece with warm tap water. Dry thoroughly.
 - Wipe off the instrument with a clean soft cloth.
- Return the instrument to its case.

Baritone valves occasionally need oiling. To oil your baritone valves:

- Unscrew the valve at the top of the casing.
- Lift the valve half-way out of the casing.
- Apply a few drops of special brass valve oil to the exposed valve.
- Carefully return the valve to its casing. When properly inserted, the top of the valve should easily screw back into place.

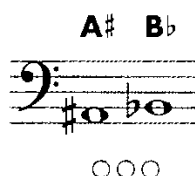
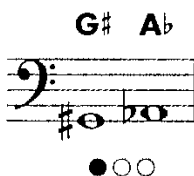
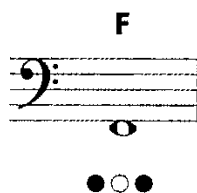
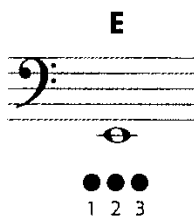
Be sure to grease the slides regularly. Your director will recommend special slide grease and valve oil, and will help you apply them when necessary.

CAUTION: If a slide, a valve or your mouthpiece becomes stuck, ask for help from your band director or music dealer. Special tools should be used to prevent damage to your instrument.



- = Open
● = Pressed down

*Instrument courtesy of
Yamaha Corporation of America,
Band and Orchestral Division*



FINGERING CHART

BARITONE B.C.

C

● ○ ○

A musical staff in bass clef with a single note C on the first line. Below the staff are three circles: a solid black circle followed by two open circles.

C# Db

○ ● ●

A musical staff in bass clef with two notes: C# on the first line and Db on the first space. Below the staff are three circles: an open circle followed by two solid black circles.

D

● ● ○

A musical staff in bass clef with a single note D on the first space. Below the staff are three circles: two solid black circles followed by one open circle.

D# Eb

● ○ ○

A musical staff in bass clef with two notes: D# on the first space and Eb on the second line. Below the staff are three circles: a solid black circle followed by two open circles.

E

○ ● ○

A musical staff in bass clef with a single note E on the second line. Below the staff are three circles: an open circle, a solid black circle, and another open circle.

F

○ ○ ○

A musical staff in bass clef with a single note F on the second space. Below the staff are three open circles.

F# Gb

○ ● ●

A musical staff in bass clef with two notes: F# on the second space and Gb on the third line. Below the staff are three circles: an open circle followed by two solid black circles.

G

● ● ○

A musical staff in bass clef with a single note G on the third line. Below the staff are three circles: two solid black circles followed by one open circle.

G# Ab

● ○ ○

A musical staff in bass clef with two notes: G# on the third line and Ab on the third space. Below the staff are three circles: a solid black circle followed by two open circles.

A

○ ● ○

A musical staff in bass clef with a single note A on the third space. Below the staff are three circles: an open circle, a solid black circle, and another open circle.

A# Bb

○ ○ ○

A musical staff in bass clef with two notes: A# on the third space and Bb on the fourth line. Below the staff are three open circles.

B

● ● ○

A musical staff in bass clef with a single note B on the fourth line. Below the staff are three circles: two solid black circles followed by one open circle.

C

● ○ ○

A musical staff in bass clef with a single note C on the first line. Below the staff are three circles: a solid black circle followed by two open circles.

C# Db

○ ● ●

A musical staff in bass clef with two notes: C# on the first line and Db on the first space. Below the staff are three circles: an open circle followed by two solid black circles.

D

○ ○ ○

A musical staff in bass clef with a single note D on the first space. Below the staff are three open circles.

D# Eb

● ○ ○

A musical staff in bass clef with two notes: D# on the first space and Eb on the second line. Below the staff are three circles: a solid black circle followed by two open circles.

E

○ ● ○

A musical staff in bass clef with a single note E on the second line. Below the staff are three circles: an open circle, a solid black circle, and another open circle.

F

○ ○ ○

A musical staff in bass clef with a single note F on the second space. Below the staff are three open circles.

F# Gb

○ ● ●

A musical staff in bass clef with two notes: F# on the second space and Gb on the third line. Below the staff are three circles: an open circle followed by two solid black circles.

G

● ● ○

A musical staff in bass clef with a single note G on the third line. Below the staff are three circles: two solid black circles followed by one open circle.

G# Ab

● ○ ○

A musical staff in bass clef with two notes: G# on the third line and Ab on the third space. Below the staff are three circles: a solid black circle followed by two open circles.

A

○ ● ○

A musical staff in bass clef with a single note A on the third space. Below the staff are three circles: an open circle, a solid black circle, and another open circle.

A# Bb

○ ○ ○

A musical staff in bass clef with two notes: A# on the third space and Bb on the fourth line. Below the staff are three open circles.